



Nirmiti foundation
Annual report
2013 -2014



Registered Address

Hemadee CHS, Plot 3A, A 303

Sector 11, Kamothe 410209

www.nirmitifoundation.org

Table of Content

3	Vision & Mission, Board of Trustee
4	Governance Structure Organization Chart
5	History
6-10	Current Projects
11 -15	Audit Report

Vision

Enhancing quality life and build humanitarian society

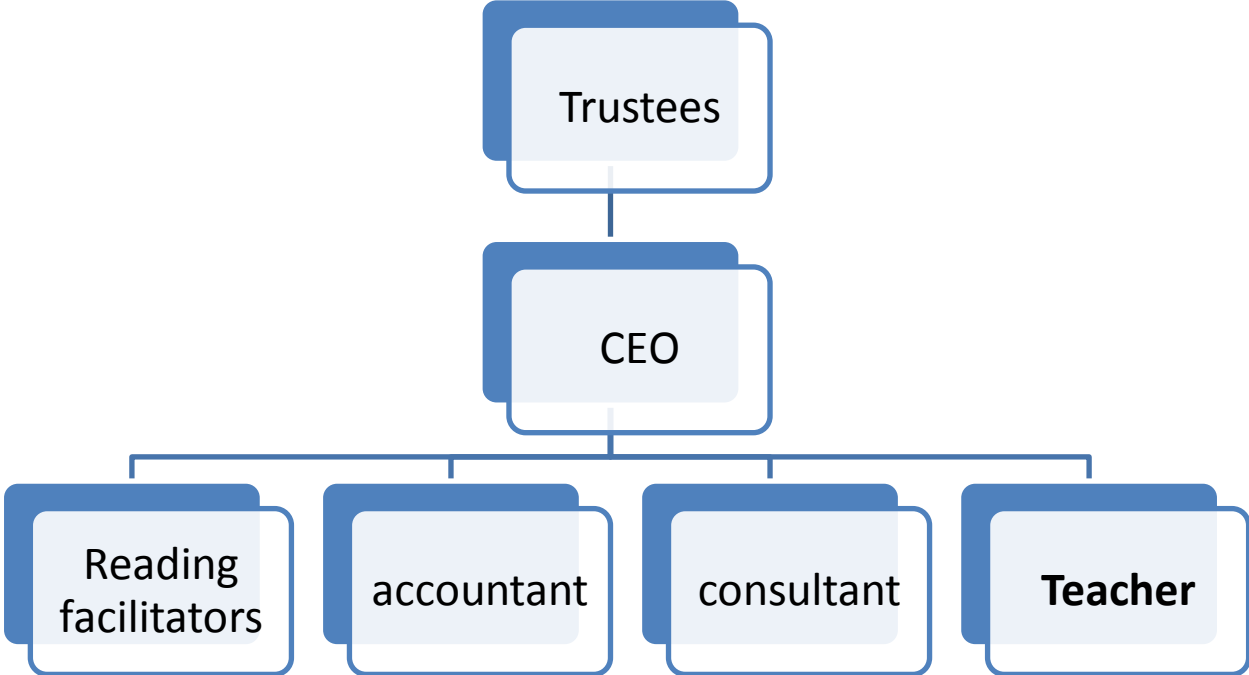
Mission

To encourage and engage in education, health, sports, research activities to pave the way for betterment of society

Board of Trustees

President	Ms. Jyoti Inamdar
Secretary	Ms. Rashmi Asthana
Vice President	Mr. Manoj Shirsath
Treasurer	Mr. Mahamad Inamdar
Trustee	Ms. Anju Jinde
Trustee	Ms. Sunil Thanage
Trustee	Mr. Gautam Kamble

Governance Structure and Organizational Chart



History

2011

Registration of NGO
under Bombay public
charitable trust

Teach India Project
by Times of India &
British Council

E learning project by BCPT

2012

School library project from BCPT

12 A Registration

2013

School library project from BCPT

National Child labor project

80 G Registration

Website development

Current Project

School library

NF is one of the NGO who is carrying out projects on Formal and Non formal education in region of Navi Mumbai slums and Raigad District with support of funders like Bombay Community Public Trust. The vision of NGO is to minimize the impediments and to upscale the resources for children in their developmental age. During the execution of projects it is gaining experience and support of community and networking from the various stakeholders. NF desires to fulfill the maximum needs of children and support to and by Stakeholders.

Project area:

Mahape is a suburb of Navi Mumbai, located near to Ghansoli and Kopar Khairane Railway Station. Suburb is one of the biggest industrial hubs in Mumbai and Suburb. Millenium Business Park, a government owned IT park, is situated here. Also many of IT vendors, like Mastek, Hex aware Technologies and Iflect, have corporate offices here. Due to industrialization of this entire area there is huge population of slum dwellers and migrants. This population is not getting basic facilities and dense overcrowding. Education and Health are the two most deprived areas for these people. However NMMC have two schools to meet the educational needs of children.

❖ HANUMANNAGAR NMMC SCHOOL NO 39 : Hanuman Nagar, Mahape , New Mumbai

❖ NMMC SCHOOL NO 40 : Mahape village , Mahpe , New Mumbai

Physical Facilities & Environment

The library is well equipped with basic infrastructure facilities like chairs, cupboard, adequate black board, bathrooms.etc. We have 4 experienced librarians. The project is being implemented in all centers very effectively.

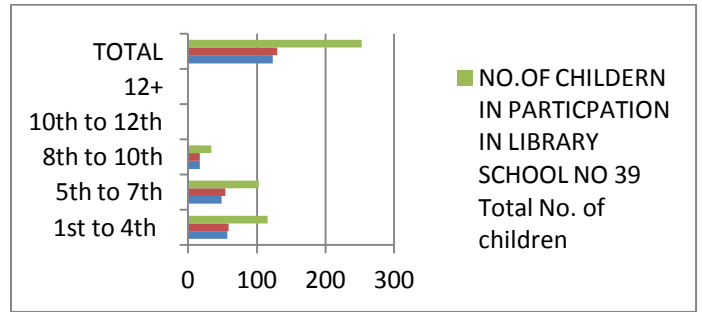
BOOK COLLECTION

Languages	Total Books in Stock as on May 2014 (SCHOOL NO.39)	Total Books in Stock as on May 2014 (SCHOOL NO.40)
Marathi	406	354
Hindi	210	230
English	105	151
Urdu	0	0
Total	721	735

CHILDRENS PARTICPATION IN LIBRARY

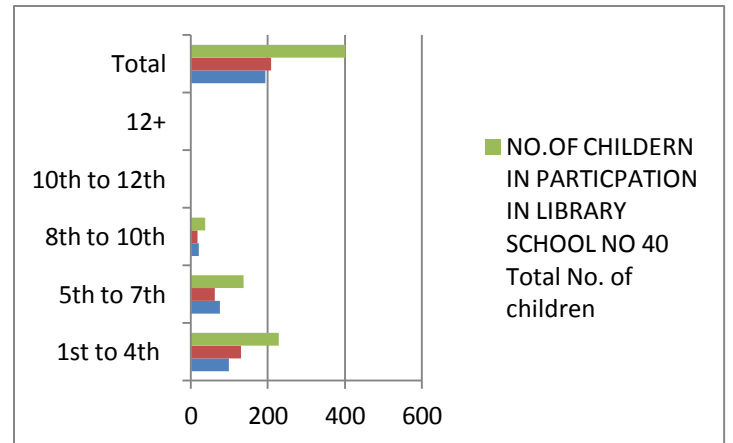
SCHOOL NO 39

Std.	Boys	Girls	Total
1st to 4th	57	59	116
5th to 7th	49	54	103
8th to 10th	17	17	34
10th to 12th	0	0	0
12+	0	0	0
TOTAL	123	130	253



SCHOOL NO 40

Std.	Boys	Girls	Total
1st to 4th	98	130	228
5th to 7th	75	62	137
8th to 10th	20	17	37
10th to 12th	0	0	0
12+	0	0	0
Total	193	209	402



Achievement

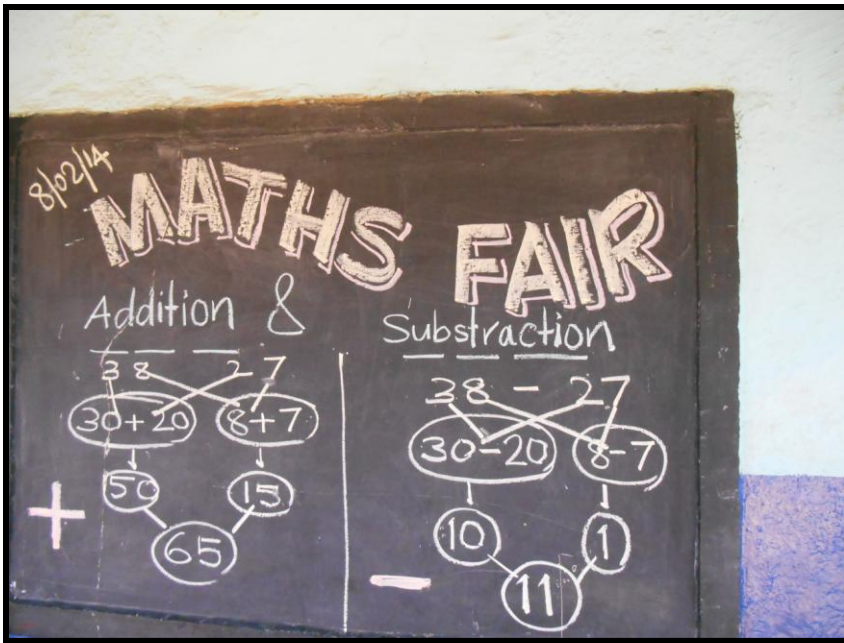
Library is a place for the children to read various types of books which they enjoy a lot. In addition to it we have initiated to arrange various activity and games by which their reading and comprehension ability will improve. In each month we arrange 4 activities for 1st to 4th standard. All the activities were useful. Following are the two activities which they enjoyed a lot. First activity was of word chain, children were told to write words in the book and next 9 words will start from the end alphabet of the word. Second game like to make a draw of the chits on which there was different names. The children will make a sound or imitate the action which was written on the chit. Children also get knowledge from calendar game

Feedback:

Children expressed interest in reading poetry, drama and game books.

Principal have suggested reference and academic books as it will be useful during the examination.





NATIONAL CHILD LABOUR PROJECT

Thane Municipal Corporation has granted us opportunity to run Child labour special Training classes 17 and 18 for Sarswati Nagar, Powai Chawk and Ulhasnagar area.

- ❖ Special Training classes 17
- ❖ Special Training classes 18

Important component of the Project:-

Survey: Survey is the starting point for the Child Labour project. The Project Society conducts the survey in the project area to determine target group. The survey ordinarily provides information on the magnitude of child labor, its classification by occupation, age and its geographical distribution.

Accommodation: The scheme allows the project society to rent suitable accommodation for having the special school.

Nutrition: Children in the special school are served nutritious meal on a daily basis.

Stipend : Every child in special school, has to be paid a stipend of Rs.100/- per month. The amount has to be deposit in the saving account opened in the Post Office/Bank in the name of the child. The accumulated amount can be withdrawn by the beneficiary only at the time of mainstreaming.

Health Check-up : The Project Society ensures regular health check-up of the children enrolled in special schools. Health Card in respect of every child is available at the school.

Educational Instructor: Every special school of 50 children involves two educational instructors and one vocational instructor. An amount of Rs.10000/- per school per year has been provided for educational and vocational material.

Vocational Training: Vocational training has been given special emphasis in the scheme. The reason is that the children enrolled are mainly in the older age group of 9-14 years and have had previous experience.

Staffing Pattern: Projects society & Special Schools : The Project Society will implement all project components in the district under the Chairmanship of District Collector/Magistrate. The Project Director will have the direct responsibility for implementing the project under the overall supervision and guidance of the Chairperson. At the Project Society level the Project Director will be assisted by two field officers, one Clerks-cum-Accountant, one Steno/ Data Entry Operator and a Peon.

At the Special School Level for every special school of 50 children the scheme provides two Educational Instructor, one Vocational Instructor, one Clerk-cum-Accountant, and one Peon/Helper. In addition to the above, the scheme also provides one Master Trainer at the district level and one Doctor for every 20 special schools.

Component	Special Training classes 17	Special Training classes 18	Total children
Survey	300	300	600
Accommodation	50	50	100
Stipend	50	50	100
Health Check-up	50	50	100
Educational Instructor(mean string)	50	50	100

